

—  
Lathe Controller

Milling Controller  
—



NEXT  
GENERATION  
CNC CONTROLLER  
—

Trusted technical service

---



## Profile

SYNTEC has been devoted to the machine tool industry with 100% owned controller technologies cultivated to be innovated in both hardware and software. In addition to the well known reputation in machine tool controllers, SYNTEC extended our businesses to servo products, drive, motors, and encoder in order to provide not only higher servo products performance but also one-stop solution service of a tool machine. SYNTEC has earned our customer trust by comprehensive after-sales service and has become one of the most influential and development potential brands in the Asia-Pacific market. SYNTEC now is taking "Industry 4.0" as the main goal of technological development.



---

Next Generation Controller	<u>01</u>	Integrated Cloud and Drive	<u>15</u>
Panel Layout	<u>03</u>	Intelligent Peripheral Products	<u>17</u>
System Component	<u>07</u>	Product Specification Table	<u>21</u>
Lathe Controller	<u>09</u>	Global Branches Location	<u>29</u>
Milling Controller	<u>11</u>		

# 01 Next Generation Controller

The latest design, advanced communication control and powerful performance.



## Brand new design - Next Generation Controller

01

- Fully-flat screen with attractive appearance
- Provides touch screen option to make operations easier
- Two screen sizes 10" and 15" are provide
- Right row button added in 15" controller for user friendly operating shortcut
- Applies to 5-axis machine, vertical machining center, and turn-mil machine
- Modular hardware design and auto backup system that could improve maintenance efficiency and make it easy to repair
- 10" screen controller is compatible to classic model 8" screen controller.
- Improves the reliability and stability by enhances the oil-proofness, dust-proofness, and heat dissipation

## Powerful and Diversified Communication Interfaces

02

02

Serial connect, high speed and high reliability.



### Factory Cloud Connected

With dual-RJ45, connect to cloud and tune on-site in the meantime.

### Syntec SRI Interface

Unique SRI PROTOCOL (Syntec Remote Interface) for extra IO (max:4096), AD DA, and support modbus RS-485 to connect with Inverter or PLC module.

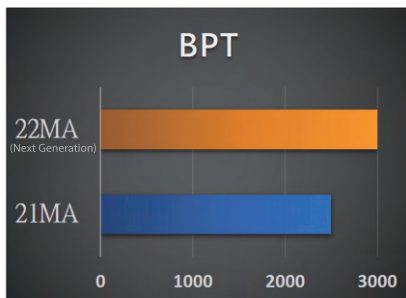
### Universal CNC controller

Support various serial communication interfaces, such as Mechatrolink-III, EtherCAT and RTEX.



## High Performance

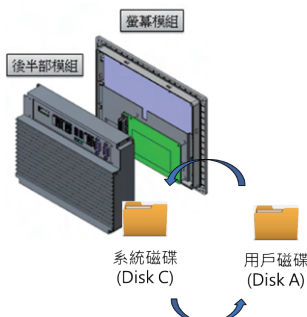
03



Higher performance due to both hardware and software being upgraded.

- CPU promoted, BPT elevated 20%, fluent HMI.

## Special design for 24-hour factory 04



High reliability and considered repairing design can solve controller breakdown and restore system datas immediately by changing module.

- Module design to remove damaged module only.
- AB backup to restore datas quickly after repairing.

## Best Partner: Syntec Servo Products 05



Diverse servo products for tool machine.

- Collaborated with well-known manufacturers, offer diverse servo products.
- Professional tuning and service, Syntec is your best partner.

\*SYNTEC have the right to modify product specification if necessary\*

# Panel Layout

## SYNTEC Lathe Controller

The SYNTEC controller is well designed and integrated, significantly reducing wiring and space requirements. With latest M3 serial communication, SYNTEC controller provides better performance and integration to CNC machines.

### 15 inch Lathe Controller

Keyboard VK15  
Panel: ST4022T



### 10 inches Lathe Controller

Panel: ST4022T



Keyboard VK10  
Panel: 3025T



Keyboard HK-900  
Panel: 4425T2

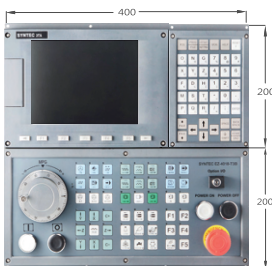


Controller Type	Standard		Turn-Mill Machine				Multi-Path Turn-Mill Machine				
	6TA-E *	7TA **	2ITA-E	21TB-E	22TA	22TB	210TB-E	210TB-E5	220TB	220TB-5	
Axis No.	3(5)	3(4)	4	6(8)	4	6(8)	12(18)		12(18)		
DA	2	—	2		—		2		—		
I/O	RIO	—	64/64								
	SRI	○									
	Direct I/O	32/32	—	32/32		—		32/32		—	
Type & Size	With Panel	8"	8"	8"/10.4"		8"/10.4"/15"		8"/10.4"	10.4"	10.4"/15"	
	With Panel (Flat)	—	—	—		10.4"/15"		—		10.4"/15"	
	Stand Alone	—	—	○		—		○	—	—	
Servo	M3/EtherCAT										
VGA	—	—	○ ***		—		○ ***		—		
Connection	Ethernet/RS485/SRI		Ethernet/RS485/SRI		Ethernet/RS485/SRI		Ethernet/RS485/SRI		Ethernet/RS485/SRI		
Multi-Path	1	1	2		2		4		4		
Storage	512MB	4GB	512MB		4GB		4GB	4GB	4GB	4GB	
Titled Working Plane Machining	—	—	△				△				
RTCP	—	—	—				△				

Marks: \* Provided in Overseas and China / \*\*Only provided in China / \*\*\*Only provided for the stand alone with VGA / ○ Standard Function / △ Optional Function / - Not Available Function

## 8 inches Lathe Controller

Panel: 4018T3



Keyboard VK8-900

Panel: 2625T



Panel: 4012T2



# Panel Layout

## SYNTEC Milling Controller

The SYNTEC controller is well designed and integrated, significantly reducing wiring and space requirements. With latest M3 serial communication, SYNTEC controller provides better performance and integration to CNC machines.

### 15 inches Milling Controller

Keyboard VK15  
Panel: ST4022M



### 8 inches Milling Controller

Panel: 4012M

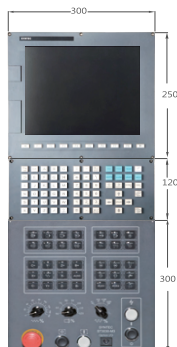


### 10 inches Milling Controller

Keyboard VK10  
Panel: 3030M5



Keyboard VK  
Panel: 3030M3



Panel: 4025M



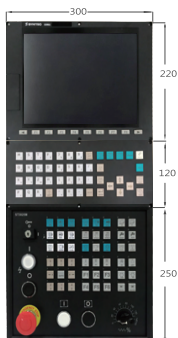


Controller Type	Standard		Multi-FunctionMilling		Composite Milling				Five-Axis			
	6MA-E	6MB-E	21MA-E	22MA	210MA-E	210MB-E	220MA	220MB	210MA-E5	210MB-E5	220MA-5	220MB-5
Axis No.	3	4(5)	6	6	8(9)	12(18)	8(9)	12(18)	8(9)	12(18)	8(9)	12(18)
DA	2		2	△	2		△		2		△	
I/O	RIO	64/64										
	SRI	○										
	Direct	32/32	32/32	32/32	—	32/32	32/32	—	32/32	32/32	—	—
Type & Size	With Panel	8"	8"/10.4"/15'	8"/10.4"/15'	10.4"		10.4"/15"		10.4"		10.4"/15"	
	With Panel (Flat)	—	—	10.4"/15"	—		10.4"/15"		—		10.4"/15"	
	Stand Alone	—	○	—	○		—		○		—	
Servo	M3/ECAT/RTEX											
VGA	—	○*	—	—	○*	—	—	—	○*	—	—	—
Connection	Ethernet/RS485/SRI											
Multi-Path	2	2		4		4		4		4		
Storage	4GB											
RTCP	—	—		—		—		—		△		
4-Axis RTCP	—	△		—		△		—		△		
Titled Working PlaneMachining	—	△		—		△		—		△		
HPCC	—	○		—		○		—		○		

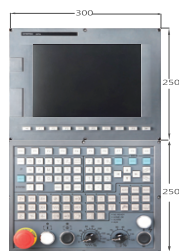
Marks: \* Provided in Overseas and China / \*\*Only provided in China / \*\*\*Only provided for the stand alone with VGA / ○ Standard Function / △ Optional Function / - Not Available Function

## 10 inches Milling Controller

Keyboard VK10  
Panel: 3025M



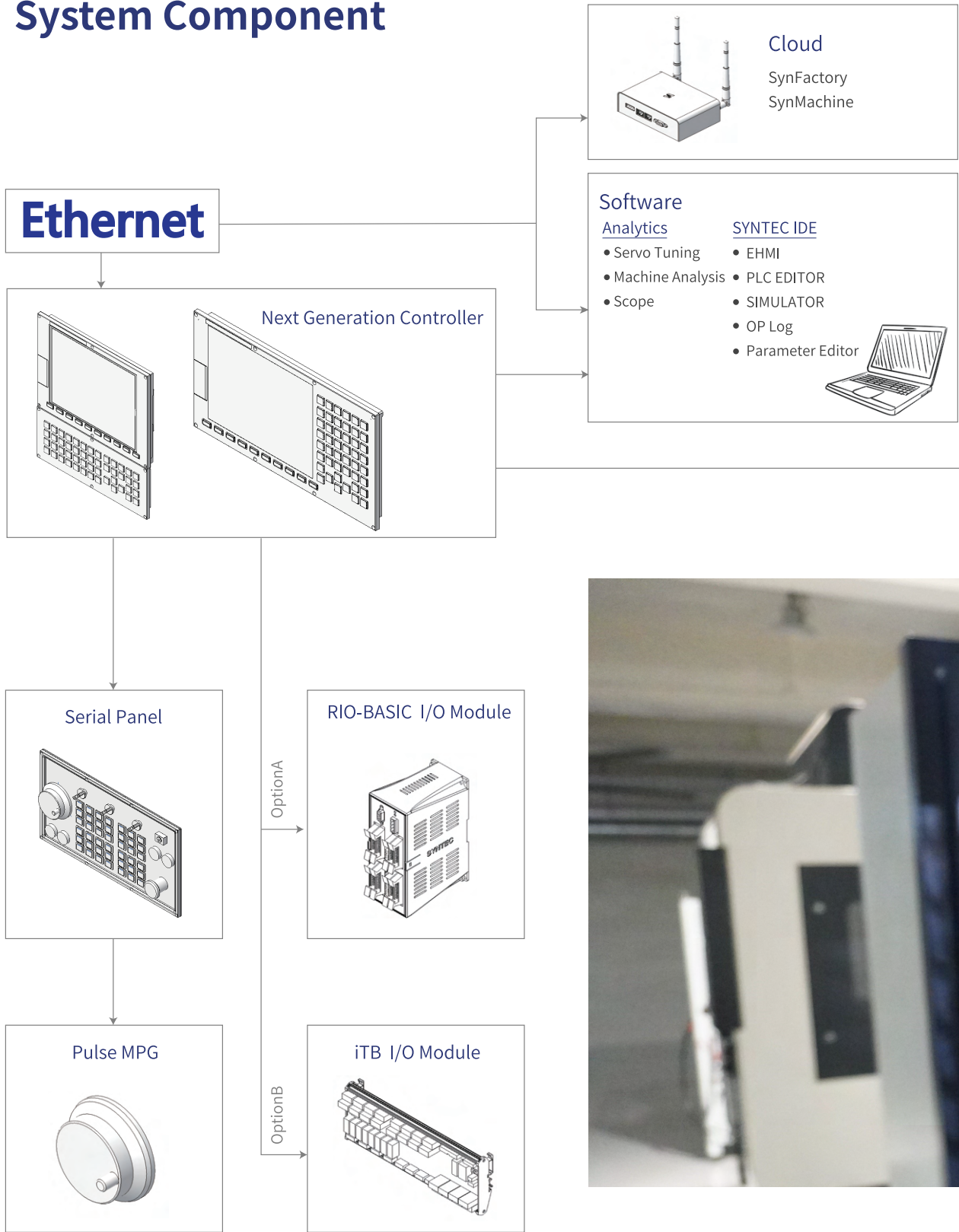
Panel: SK6M

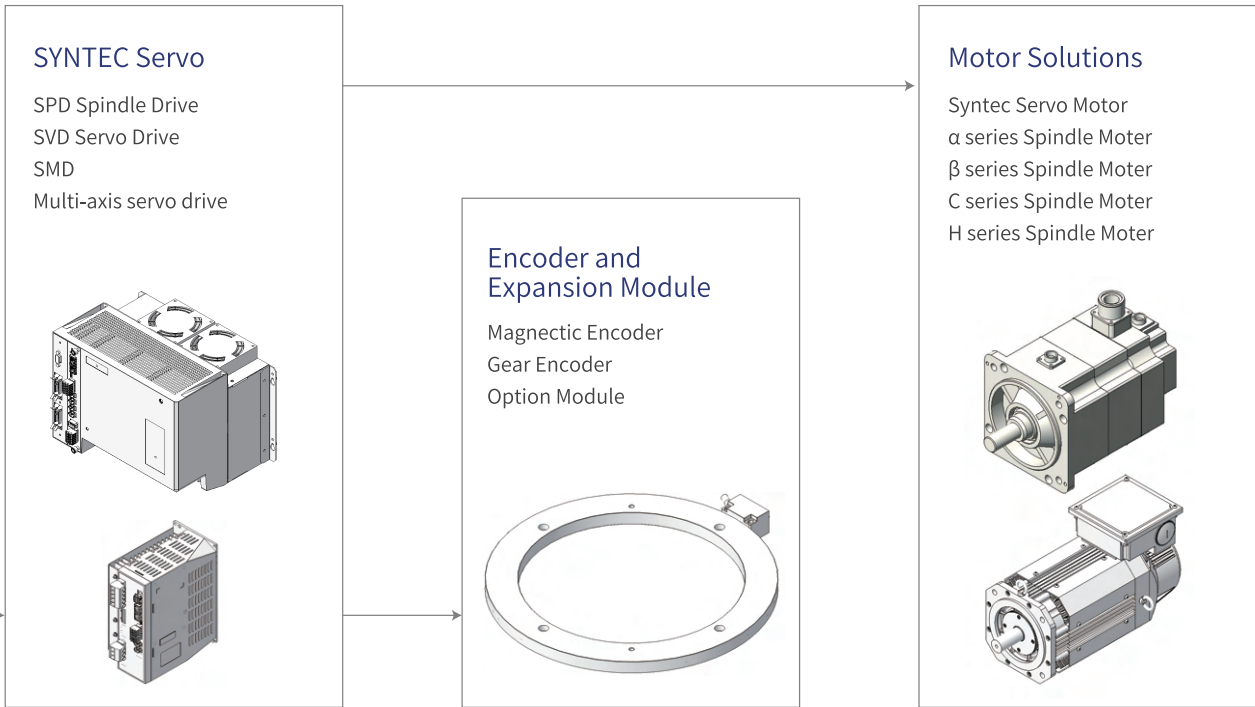


Keyboard HK-900  
Panel: 4421M2



# System Component



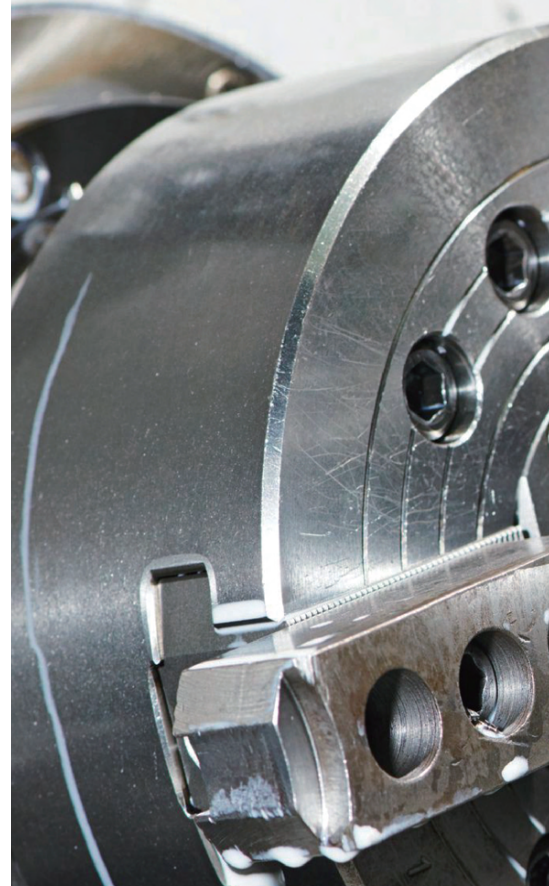


\*SYNTEC have the right to modify product specification if necessary\*

# Lathe Controller

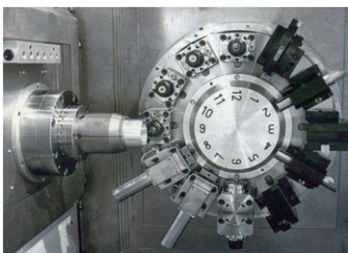
## The most trusted controller with advanced turning functions

- Complete ISO G code ,corresponds to turning and milling application.
- Friendly insertion of canned cycles provides easy programming guidance for customers.
- Powerful MPG simulation allows users to control feed rate in the dry run process by using MPG.
- Suitable for all types of lathe, such as turn-mill lathe, CNC precision automatic lathe, multipath turning center and even five-axis turn-mill lathes.



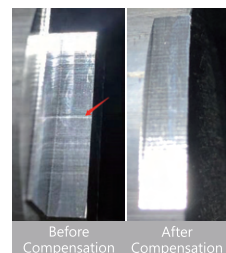
## ROT Servo Turrent

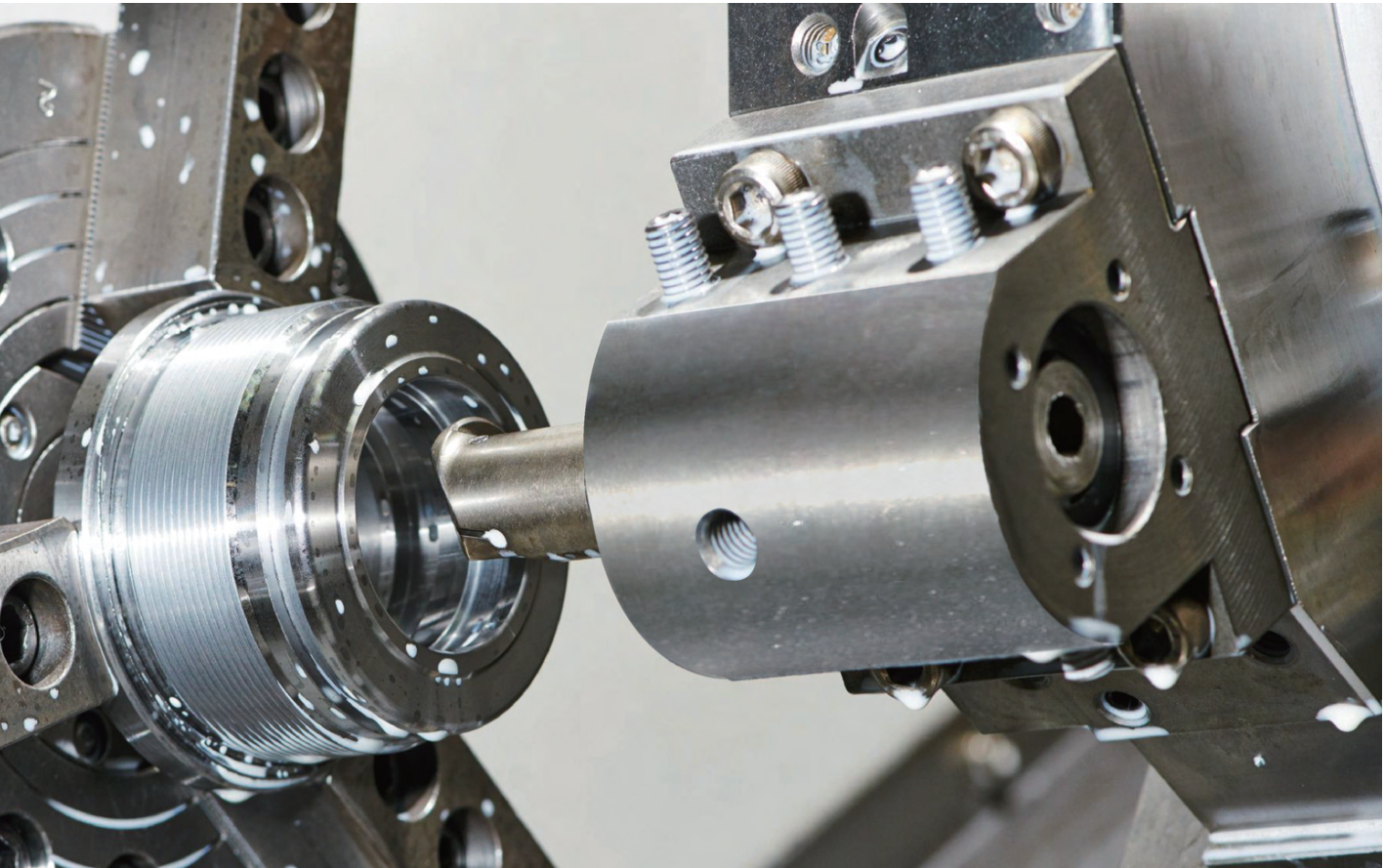
- Provide dedicated PLV component.
- Features :
  - Replace IO cable with communication cable.
  - Backup all related information to the system.
  - Do not need an additional system NC path.
  - Support non-synchronous motion control.
- Support SYNTEC and YASKAWA servo drive.



## Friction Compensation (VFF)

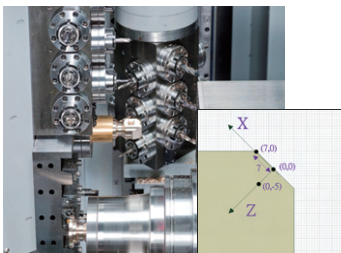
- Reduce friction caused by direction reversal.
- Tuning the parameters automatically.
- Compensation various automatically from different radius and feedrate, at most 5 sets of R/F.velocity.





### Titled Working Plane Machining

- Intuitive to program NC by rotary absolute coordinate.
- Easy to program NC without using complex CAD/CAM processing.



### New Multi-Program Interface

- Up to four paths display simultaneously.
- Support coordinate display and graphic simulation in each path.
- Optional extension-path function can assign arbitrary plural paths to machine or not.
- Execute independently in each channel to reach optimized efficiency.



### Tool Life Management Function

- Succinct interface with whole tool information.
- Completed functions including tool life count (time and count), tool life count of multi-group path, tool group, life-end alarm setting, tool-in-formations arrangement..etc.



# Milling Controller

High performance Milling Controller with Multiple high speed and high precision functions.

- Powerful computing performance with the ability to process 3000 blocks per time
- High speed and high precision functions include servo lag compensation, high precision contour control, machining conditions selection, which increase machining quality effectively.
- Flexible axis quantity selection with maximum 18 axes, which provides the best solution for machining center, tapping center, 5-axis machining center and multi-path milling machine.

## Servo motor automatic tool changer

Makes tool stable with shorter time

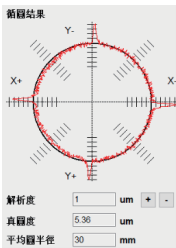
- Servo magazine is controlled by the ROT axis, and servo ATC is controlled by ATC axis; both of these specific axes don't occupy the system axis.
- Release and clamp tools in advance in order to save tools changing time.
- The system plans smooth motion to reduce impact and extend machine life.
- The rotation speed can be specified according to tool size and weight, which makes tool change steady and stable.
- Tool arm position can be controlled by MPG easily, no need to restore position by handling mechanism.
- The function contains diagnose screen which provides useful and clear information.



## Friction Compensation

Improves surface finish quality under axis reversal condition

- Convenient Ballbar Tuning interface with auto tuning functions.
- Different compensation modes can meet different machining conditions.



Reversal spike without compensation  
5 μm



Reversal spike with compensation  
1.5 μm

## Machine Condition Selection

Optimize parameters case by case under various machining conditions

- 9 groups of parameters, satisfy all kinds of machining situations.
- Select corresponding parameters by G-code or GUI.





## High Precision Contour Control (HPCC)

Solve machining problems caused by discontinuous small blocks which generated by CAD/CAM

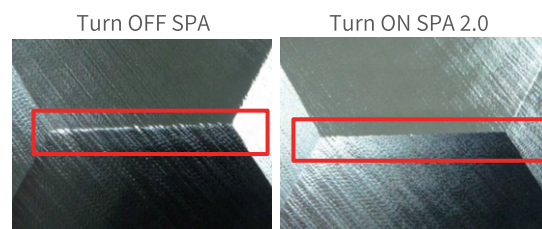
- The HPCC function fits small blocks to a continuous curve, which makes the motion plan smoother and avoids unwanted velocity ripple.
- Reduces machine vibration, extends machine life, and allows higher cutting feedrate.
- The parameters are simplified which makes it easier for the user to tune before machining.



## The Smooth Precision Advance function (SPA) 2.0

Solve workpiece size problem caused by servo lag

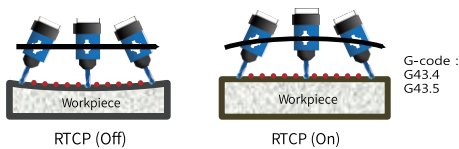
- Enhance machining precision and reduce machining overcut.
- Increase arc path accuracy under high speed machining.
- Higher machining efficiency with the same quality.



## 5-Axis CNC Solution (Optional)

### Rotation Tool Center Point

01


**Scenario:**

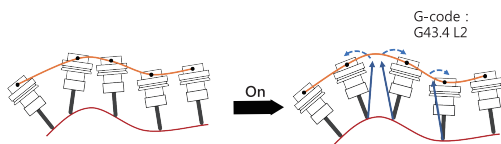
Workpieces with curvature, 5 axis CNC machine centers, 5 axis CNC woodworking machine ,5 axis CNC saw machine etc.

**Instruction:**

The RTCP (Rotation Tool Center Point ) function provides high machining precision and efficiency by transferring the controlled target from tool holder to tool tip through five-axis compensation.

### Smooth Tool Vector

02


**Scenario:**

Machining problems caused by unexpected block variations of the tool vector, which is generated by CAM.

**Instruction:**

The controller can adjust the orientation of the tool and smooth the path of tool tip generated by CAM to improve quality and to reduce the jerk of the tool tip.

### Feature Coordinate

03

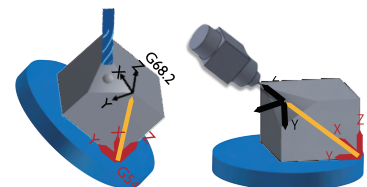
**Scenario:**

Machining on a workpiece of characteristic coordinate system.

**Instruction:**

Characteristic coordinate system, which is also called tilted working plane coordinate, can be applied to machines on any working plane without using complicated CAM.

G-code :  
G68.2 X\_ Y\_ Z\_ I\_ J\_ K\_  
G68.3 X\_ Y\_ Z\_ R\_  
G68.3 P1 X\_ Y\_ Z\_





## Measurement function

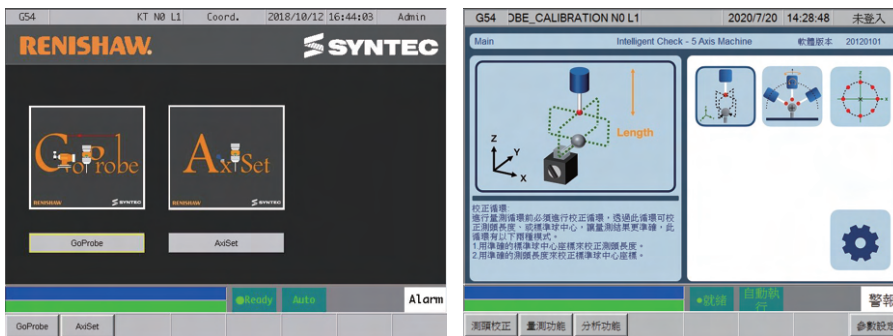
04

### Available scenario:

Measure and compensate for the rotation axis of a five-axis machine with RTCP function.

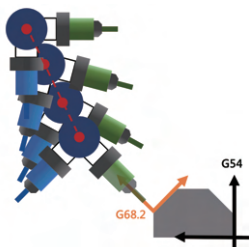
### Instruction:

The controller integrates the automatic measurement function which can reduce the difficulty of calibration through GUI, and achieve high precision requirements.



## Multi-Kinematic Chain

05



### Scenario:

Cross head mechanism, stone machine, and machines with multiple mechanism chains.

### Instruction:

A five-axis machine with multiple mechanism types can set Multi-kinematic chain parameters that the user can switch and activate the RTCP function according to the mechanism.

## Intelligent Peripheral Products

---

Syntec Servo Solutions

01

### SVD/SPD Single-Axis Servo Driver

---

- Various serial communications of encoder are supported
- Completed eletromechanical integration.
- Power: 1~30 (KW)



### SMD/SMH Multi-Axis Servo Driver

---

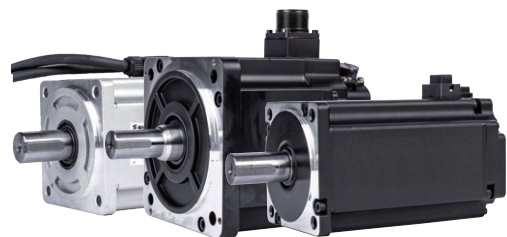
- Suitable for machine tool.
- Maximum 3+1 axis control.
- Compact eletromechanical integration, such as tool auto retract function, friction compensation, etc.
- Axial power: 1~3 (KW); Spindle power: 7.5~18.5 (KW).



### Axis Motor

---

- IP67 for high-level waterproof and dustproof protection.
- Support Power: 0.1~7.5 (KW)
- Max torque: 0.32 ~120.9 (NM)
- Max Speed: 2,000 ~ 6,000 (RPM)

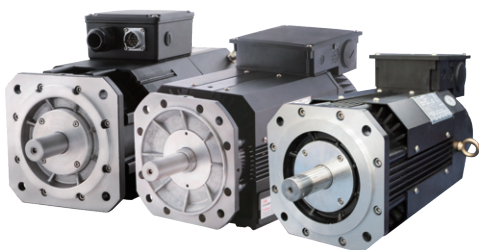




## Spindle Motor

---

- With SYNTEC high resolution encoder, SYNTEC spindle motor is more precise and stable.
- IP54 for high-level waterproof and dustproof protection.
- Support power (S2) : 5.5~ 37.5 (KW)
- Max torque: 10.4 ~ 355 (NM)
- Max speed: 6,000 ~24,000 (RPM)



## Syntec Encoder

---

- Support side and top connection
- High precision, high resolution and available in harsh environment.
- Resolution: 262,144~1,335,296 (Pulse)
- Ploes: 64、82、102、124、162、242、326



## Integrated Controller and Drive

Syntec provides a series of integrated functions for Syntec controller and servo. Servo information can synchronously display in controller by Mechatrolink-3 communication, in order to make the integrated solution more intelligent.

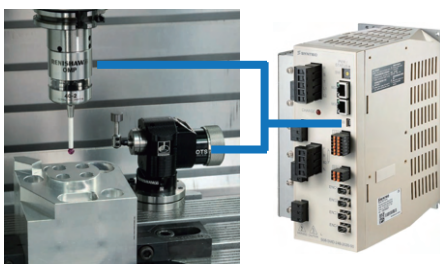
## Intelligent power failure decision

- The drive will decelerate and pull-up gravity axis while in power failure, which can prevent machine and workpiece from unexpected collision.
- Controller only decelerates motors to zero speed as tapping and other special motions, in order to prevent machine damage.



## High-Speed G31

- SYNTEC drive can latch the signal of probe or tool checker directly, which achieves faster response than general i/O scanning.
- Application: With SYNTEC drive and high-speed G31 function, users can increase feedrate of tool length measurement without losing accuracy, which improves efficiency.



## Syntec Tuning (One Step Tuning)

- Tuning is simple and fast. Servo tuning can be done directly through the controller HMI, without connecting computer.
- Functions: Inertia ratio, resonance suppression, velocity loop gain tuning.



Syntec Robot Solution

03

81R Robot Controller



CNC Controller +All In One

81R Robot Controller	
Feature	<ul style="list-style-type: none"> <li>• Easy point-teaching with handheld controller</li> <li>• Friendly tray setting interface</li> <li>• Suitable for complicated pick and place-conditions</li> </ul>
Applicable Model	<ul style="list-style-type: none"> <li>• Robot arm for complicated movements</li> <li>• Any length of stroke</li> <li>• Robot arm attached to lathe</li> </ul>

All In One	
Feature	<ul style="list-style-type: none"> <li>• Control by G-code, M-code</li> <li>• Connected to CNC directly, decrease the usage- of external signal</li> <li>• Easy to customize</li> </ul>
Applicable Model	<ul style="list-style-type: none"> <li>• Gantry attached ti machine</li> <li>• Short stroke gantry</li> </ul>

Feature Introduction



- Highly integrated machine and arms
- Friendly setting and programming GUI
- One controller could complete picking and placing and lathe processing simultaneously
- Support safety zone setting, reference point setting, etc.

\*SYNTEC have the right to modify product specification if necessary\*

SYNTEC cooperated with RENISHAW to develop inspection GUIs, which simplifies the process of probing and helps users to improve efficiency and yields of manufacturing.

- Multi-Axis Machine Tool Calibration (AxiSet™ Check-Up)
- Probing systems in CNC machining (Inspection Plus)
- Contact tool setter
- Non-contact tool setter

### Probing Systems Solution

### Multi-Axis Machine Tool Calibration

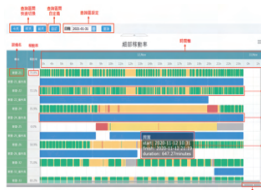
### Tool Setting Solution

## SynFactory SYNTEC Cloud Service Platform

05

### Statuses Charts

Collects accumulated data of equipment states during the process and process change.



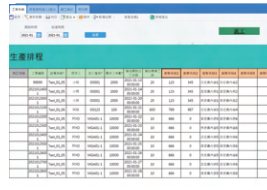
### Equipment States

Automatically detects and monitors various equipment conditions



### Planning and Scheduling

works new orders into production schedule



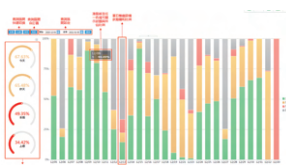
### Reporting

extracts detailed records of equipment operation on work orders



### Historical Utilization

calculates utilization rate, availability and accumulates all equipment statuses of floorshop



### Alarms

shows historical records of alarms



### Production dispatching:

manages the flow of production and dispatches production to equipment



### Work Order Tracking

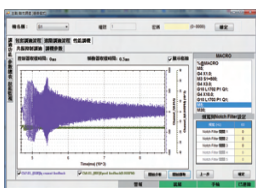
monitors real-time processing of work orders



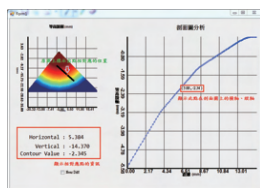
## Mechatronics Analysis Platform

06

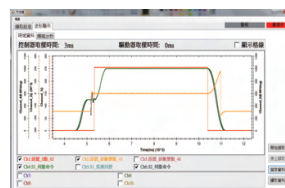
SYNTEC provides analysis software which is useful for servo tuning and CNC visualization, helping machine builders to develop and diagnose effectively.



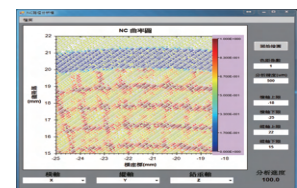
Servo tuning functions



Adjacent paths analysis



PLC signal scope sequence



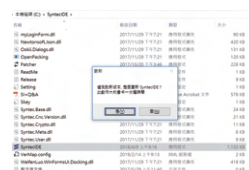
3D curvature analysis

## SYNTEC IDE

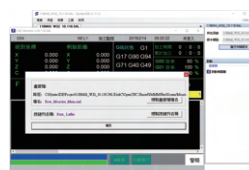
07



Integrated development tools such as HMI, PLC, simulator



Automatically update development tools and environment



Perfectly integrated with simulator, improve development efficiently

Syntec integrated developing environment (SYNTEC IDE) can automatically download and install application tools required for customization. With friendly project management, developers can easily switch between different projects or simulators.

\*SYNTEC have the right to modify product specification if necessary\*

# Specification Table

				Serial										
				6 Series*		7 Series*		21 Series		22 Series		210 Series		220 Series
Category	Items	Units	Remark	6TA-E	7TA	21TA-E	21TB-E	22TA	22TB	210TB-E	210TB-E5	220TB	220TB-5	
Product Specification	Max. Controlled Paths	Path		1	1	2		2		4		4		
	Max. Controlled Paths	Path		1	1	1		1		3		3		
	Standard Axis	Axis		3	3	4	6	4	6	12		12		
	Max. Axis (Optional)	Axis		5	4	4	8	4	8	18		18		
	Max. Spindle	Axis		3	3	2	4	2	4	6		6		
	Axis Control	Axis		3	3	4	4	4	4	4	5	4	5	
	Min. Control -mm			0.0001										
	program coordinate	Set		100	100	100		100		100		100		
	Tools	Set		32	32	96	96	96	96	96	96	96	96	
	Function Group	Set		4										
Block Processing Tim			300		500		1000		1000		1000			
Hardware Specification	Storage(DISKA)	MB		512	4096	512		4096		4096		4096		
	I/O	RIO	Point	—	64/64									
		SRI												
		Direct I/O	Point		32/32	—	32/32		—	32/32		—		
	DA	Set		2	—	2		—	2		—			
	Type and Size	All-in-one Machine	Inch		8"	8" <sup>O</sup>	8"/10.4"		8"/10.4"/15"		8"/10.4"	10.4"	10.4"/15"	
		Full-plane All-in-one	Inch		—	—	—		10.4"/15"		—		10.4"/15"	
		Back Half Machine			—	—	—		—	—		—		
	USB	Set		2	2	2		2		2		2		
	RJ-45	Set		1	2	1		2		1		2		
VGA Output	Set	O Back side	—	—	O	1 <sup>***</sup>	—		1 <sup>***</sup>	—	—			
RS-485	Set		1	1	1		1		1		1			
USB	Set		—	2	0		2		—		2			
SRI	Set		1	1	1		1		1		1			
Servo Control	Mechatrolink III / EtherCat			O	O	O		O		O		O		

Remark: \*6 series is only available in China and overseas; 7 series is only available in China

\*\*Only supports power head spindle application

\*\*\*VGA is available on the rear half only ○ indicates standard function △ indicates optional function - indicates no such function



				Serial									
				6 Series*		7 Series*		21 Series		22 Series		210 Series	
Category	Items	Units	Remark	6TA-E	7TA	21TA-E	21TB-E	22TA	22TB	210TB-E	210TB-E5	220TB	220TB-5
Compensation	Backlash Compensation			○	○	○		○		○		○	
	Putch Error Compensation			○	○	○		○		○		○	
	Angular Error Compensation			○	○			○		○		○	
	Temperature Error Compensation			○	○	○		○		○		○	
	2D Error Compensation			○	○	○		○		○		○	
Operation	MPG Simulation			○	○	○		○		○		○	
	Dry Run			○	○	○		○		○		○	
	Optional Stop			○	○	○		○		○		○	
	Single Block			○	○	○		○		○		○	
	Virtual MPG			○	○	○		○		○		○	
	Restart at Feedhold			○	○	○		○		○		○	
	Restart at Break Point			○	○	○		○		○		○	
	Tool Return			—	—	—		—		—		—	
	Fixture Offsets			○	○	○		○		○		○	
MPG Offsets			—	—	—		—		—		—		
Programming	Optional Skip			○	○	○		○		○		○	
	B-stop/Terminator Program			○	○	○		○		○		○	
	Absolute Zero Point Coordinate	G92/G92.1		○	○	○		○		○		○	
	Interrupt MACRO	M96/M97		○	○	○		○		○		○	
	M198 Call Subroutines			○	○	○		○		○		○	
	Expandable G Code			○	○	○		○		○		○	
HSHP	Constant Jerk Control			○	○	○		○		○		○	
	Multiblocks S-curve motion plan			○	○	○		○		○		○	
	Auto Declaration in Corner			○	○	○		○		○		○	
	Speed Limit for Round Radius			○	○	○		○		○		○	
	Multiple Sets of HSHP Parameters			—	—	—		—		—		—	
	Quick Parameter Setup			—	—	—		—		—		—	
	SPA Feature			—	○	○		○		○		○	
	Virtual Radius Function			○	○	○		○		○		○	
	HSHP Control Mode I	G05.1Q1		—	—	—		—		—		—	
	HSHP Control Mode II	G05P10000	OP11	—	—	—		—		—		—	
	NURBS Interpolation Ability			—	—	—		—		—		—	

\*SYNTEC have the right to modify product specification if necessary\*

# Specification Table

Category	Items	Remark	Software Function	Serial									
				6 Series	7 Series	21 Series		22 Series		210 Series		220 Series	
				6TA-E	7TA	21TA-E	21TB-E	22TA	22TB	210TB-E	210TB-E5	220TB	220TB-5
Tool Management	Auto Tool Measuring			-	-	-	-	-	-	-	-	-	-
	Auto Tool Management	Works with Renishaw Hardware only		○	○	○	○	○	○	○	○	○	○
	Tool Life Management			○	○	○	○	○	○	○	○	○	○
Tool Magazine	ROT Servo Turret	PLC Element	OP32	○	○	○	○	○	○	○	○	○	○
Spindle	Support Syntec Spindle			- (**)	○	○	○	○	○	○	○	○	○
Facilitating Functions	Machine Lock (R bit)			○	○	○	○	○	○	○	○	○	○
	Software Limit			○	○	○	○	○	○	○	○	○	○
	Spindle Speed Arrival Check			○	○	○	○	○	○	○	○	○	○
	Axis Synchronize Feature			○	○	○	○	○	○	○	○	○	○
	Dynamic Axis Synchronize Feature			○	○	○	○	○	○	○	○	○	○
	Feedback Synchronize Feature			○	○	○	○	○	○	○	○	○	○
	Rapid Retraction for Rigid Tapping			○	○	○	○	○	○	○	○	○	○
	Virtual Axis Feature			○	○	○	○	○	○	○	○	○	○
	Axis Change Feature			○	○	○	○	○	○	○	○	○	○
	Axial Torque Limit			○	○	○	○	○	○	○	○	○	○
	Serial Bus Setting Feature (CNC Axis)			○	○	○	○	○	○	○	○	○	○
	Driver Information Display (CNC Axis)			○	○	○	○	○	○	○	○	○	○
	Spindle Application Feature (CNC Axis)			○	○	○	○	○	○	○	○	○	○
	Serial Bus PLC Axis			○	○	○	○	○	○	○	○	○	○
	High-Speed Spindle Positioning	Support Syntec Spindle			○	○	○	○	○	○	○	○	○
	Dipole Front and Back System				-	○	○	○	○	○	○	○	○
	Data Backup Recovery	Maker Backup			○	○	○	○	○	○	○	○	○
	Customized Opening Screen				○	○	○	○	○	○	○	○	○
	My Favorites	Only 8 key system supports			○	○	○	○	○	○	○	○	○
	Project Protection Feature				○	○	○	○	○	○	○	○	○
Limit Access Manager				○	○	○	○	○	○	○	○	○	
RemoteAPMonitor				○	○	○	○	○	○	○	○	○	
Righ-Angle All In One			OP20	△	△	△	△	△	△	△	△	△	
3D-Arc Interpolation				-	-	-	-	-	-	-	-	-	
Program Edit	Background Edit			○	○	○	○	○	○	○	○	○	○
	Edit Protection			○	○	○	○	○	○	○	○	○	○
	Immediate Grammar Check			○	○	○	○	○	○	○	○	○	○
PLC	PLC Diagnosis Feature (FORCE I Point)			○	○	○	○	○	○	○	○	○	

Remark: \*6 series is only available in China and overseas; 7 series is only available in China

\*\*Only supports power head spindle application

\*\*\*VGA is available on the rear half only ○ indicates standard function △ indicates optional function - indicates no such function

Category	Items	Remark	Software Function	Serial											
				6 Series		7 Series		21 Series		22 Series		210 Series		220 Series	
				6TA-E	7TA	21TA-E	21TB-E	22TA	22TB	210TB-E	210TB-E5	220TB	220TB-5		
Data Transfer	NETWORK			o	o	o	o	o	o	o	o	o			
	FTP			o	o	o	o	o	o	o	o	o			
	RS-485			o	o	o	o	o	o	o	o	o			
	DNC(Network)			o	o	o	o	o	o	o	o	o			
	DNC(USB)			o	o	o	o	o	o	o	o	o			
Information Display	Operation CV Display			o	o	o	o	o	o	o	o	o			
	Graphic Simulation			o	o	o	o	o	o	o	o	o			
	Partial Graphic Simulation			o	o	o	o	o	o	o	o	o			
	Dynamic Multi-Language Switch			o	o	o	o	o	o	o	o	o			
5 Axis Feature	Feature Coordinate System (Inclined Plane Processing, The Second Axis Group supports Feature Coordinate System)	G68.2, G68.3	OP13	-	-	-	Δ	Δ	Δ	Δ	Δ	Δ			
			OP28	-	-	-	Δ	Δ	Δ	Δ	Δ	Δ			
	5 Axis RTCP	G43.4, G43.5	OP12	-	-	-	-	-	-	Δ	Δ	Δ			
	4 Axis RTCP		OP29	-	-	-	-	-	-	-	-	-			
	Multiple Mechanism-Chain	G10 L5000 P_Q_	OP27	-	-	-	Δ	Δ	Δ	Δ	Δ	Δ			
	5-Axis Mechanism Chain Measurement	RENISHAW, SYNTEC		-	-	-	-	-	-	-	-	-			
G Code Command	Spiral Interpolation	G02/G03		o	o	o	o	o	o	o	o	o			
	Elliptical Cutting (clockwise)	G02.1		o	o	o	o	o	o	o	o	o			
	Parabolic Cutting (clockwise)	G02.2		o	o	o	o	o	o	o	o	o			
	Cylindrical Interpolation	G07.1		o	o	o	o	o	o	o	o	o			
	Start Polar Coordinate Interpolation	G12.1		o	o	o	o	o	o	o	o	o			
	Outer/ Inner Diameter Truning Cycle	G20		o	o	o	o	o	o	o	o	o			
	Thread Turning Cycle	G21		o	o	o	o	o	o	o	o	o			
	Thread Turning Middke Feed Cycle	G21.2		o	o	o	o	o	o	o	o	o			
	End-Face Turning Cycle	G24		o	o	o	o	o	o	o	o	o			
	Jumping Function	G31		o	o	o	o	o	o	o	o	o			
	Thread Cutting	G33		o	o	o	o	o	o	o	o	o			
	Variable-Pitch Thread Cutting	G34		o	o	o	o	o	o	o	o	o			
	Polygon Cutting	G51.2		o	o	o	o	o	o	o	o	o			
	Work Coordinate System Setting	G54-G59.9		o	o	o	o	o	o	o	o	o			
	Mirror Function (Lathe)	G68		o	o	o	o	o	o	o	o	o			
	Duplex Cutting Cycle	G72-G78		o	o	o	o	o	o	o	o	o			
	Drilling Fixed Cycle	G80, G83-G89		o	o	o	o	o	o	o	o	o			
	Absolute Zero Coordinate System Preset	G92.1		o	o	o	o	o	o	o	o	o			
	Inverse Time Feed	G93		-	-	-	-	-	-	-	-	-			
	Constant Surface Cutting Speed	G96		o	o	o	o	o	o	o	o	o			
Spindle Synchronization Function	G114.1		-	-	o	o	o	o	o	o	o				
Spindle Bearing Function	G114.3		-	-	o	o	o	o	o	o	o				

\*SYNTEC have the right to modify product specification if necessary\*

# Specification Table

				Standard Milling Machine		Functional Milling Machine		Compound Milling Machine								
				6 Series		21 Series	22 Series	210 Series				220 Series				
Category	Items	Unit	Remark	6MA-E	6MB-E	21MA-E	22MA	210MA-E	210MA-E5	210MB-E	210MB-E5	220MA	220MA-5	220MB	220MB-5	
Product Specification	Max. Controlled Paths	Path		2	2	2	2	4				4				
	Max. Controlled Paths	Path		1	1	1	1	3				3				
	Standard Axis	Axis		3	4	6	6	8	12		8	12				
	Max. Axis (Optional)	Axis		3	5	6	6	9	18		9	18				
	Max. Spindle	Axis		3	5	4	4	6				6				
	Max. Simultaneous Axis Control	Axis		3	4	4	4	4	5	4	5	4	5	4	5	
	Min. Control -mm			0.0001		0.0001	0.0001	0.0001				0.0001				
	Max. Number of program coordinate	Set		100		100	100	100				100				
	Max. Number of Table Tools	Set		96		96	96	96				96				
	Multi-Channel Function Group	Set		4		4	4	4				4				
Block Processing Time			600		2500	3000	3000	4000	3000	4000	3000	4000	3000	4000		
Hardware Specification	Storage(DISKA)	MB		4096		4096	4096	4096				4096				
	I/O	RIO	Point	-		64/64	64/64	64/64				64/64				
		SRI		0		0	0	0				0				
		Direct I/O	Point	32/32		32/32	-	32/32				-				
	DA	Set		2		2	-	2				-				
	Screen	All-in-one Machine	Inch		8"		8"/10.4"/15"	8"/10.4"/15"	10.4"				10.4"/15"			
		Full-plane All-in-one Machine	Inch		-		-	10.4"/15"	-				10.4"/15"			
		Back Half Machine			-		0	-	0				-			
	Servo Control	CF card	Set	Front Side	-		-	-	-				-			
		USB	Set		2		2	2	2				2			
		CF card	Set		-		-	-	-				-			
		RJ-45	Set		1		1	2	1				2			
		VGAOutput	Set		-		1*	-	1*				-			
RS-485		Set	1		1	1	1				1					
USB		Set	-		-	2	-				2					
SRI	Set	1		1	1	1				1						
Servo Control	Mechatrolink III / EtherCat			0		0	0	0				0				

Category	Items	Remarks	Software Function	6 Series	21 Series	22 Series	210 Series	220 Series
Compensation	Backlash Compensation			○	○	○	○	○
	Pitch Error Compensation			○	○	○	○	○
	Angular Error Compensation			○	○	○	○	○
	Temperature Error Compensation			○	○	○	○	○
	2D Error Compensation			○	○	○	○	○
Operation	MPG Simulation			○	○	○	○	○
	Dry Run			○	○	○	○	○
	Optional Stop			○	○	○	○	○
	Single Block			○	○	○	○	○
	Virtual MPG			○	○	○	○	○
	Restart at Feedhold			○	○	○	○	○
	Restart at Break Point			○	○	○	○	○
	Tool Return			○	○	○	○	○
	Fixture Offsets			○	○	○	○	○
	MPG Offsets			○	○	○	○	○
Programming	Optional Skip			○	○	○	○	○
	B-stop/Terminator Program			○	○	○	○	○
	Absolute Zero Point Coordinate	G92/G92.1		○	○	○	○	○
	Interrupt MACRO	M96/M97		○	○	○	○	○
	M198 Call Subroutines			○	○	○	○	○
	Expandable G Code			○	○	○	○	○
HSHP	Constant Jerk Control			○	○	○	○	○
	Multiblocks S-curve motion plan			—	○	○	○	○
	Auto Declaration in Corner			○	○	○	○	○
	Speed Limit for Round Radius			○	○	○	○	○
	Multiple Sets of HSHP Parameters			—	○	○	○	○
	Quick Parameter Setup			—	○	○	○	○
	SPA Feature			○	○	○	○	○
	Virtual Radius Function			○	○	○	○	○
	HSHP Control Mode I	G05.1Q1		—	○	○	○	○
	HSHP Control Mode II	G05P10000	OP11	—	○	○	○	○
NURBS Interpolation Ability			—	○	○	○	○	

Marks: \* Provided in Overseas and China / \*\*Only provided in China / \*\*\*Only provided for the stand alone with VGA / ○ Standard Function /  
△ Optional Function / - Not Available Function

# Specification Table

				Standard Milling Machine		Functional Milling Machine		Compound Milling Machine								
Category	Items	Remark	Software Function	6 Series		21 Series	22 Series	210 Series				220 Series				
				6MA-E	6MB-E	21MA-E	22MA	210MA-E	210MA-E5	210MB-E	210MB-E5	220MA	220MA-5	220MB	220MB-5	
Tool Management	Auto Tool Measuring				○	○	○	○				○				
	Auto Tool Management	Works with Renishaw Hardware only			○	○	○	○				○				
	Tool Life Management				○	○	○	○				○				
Tool Magazine	ROT Servo Turret	PLC Element	OP32		△	△	△	△				△				
	ATC Automatic Tool Change				—	○	○	○				○				
Spindle	Support Syntec Spindle				—	○	○	○				○				
Facilitating Functions	Machine Lock (R bit)				○	○	○	○				○				
	Software Limit				○	○	○	○				○				
	Spindle Speed Arrival Check				○	○	○	○				○				
	Axis Synchronize Feature				○	○	○	○				○				
	Dynamic Axis Synchronize Feature				○	○	○	○				○				
	Feedback Synchronize Feature				○	○	○	○				○				
	Rapid Retraction for Rigid Tapping				○	○	○	○				○				
	Virtual Axis Feature				○	○	○	○				○				
	Axis Change Feature				○	○	○	○				○				
	Axis Torque Feature				○	○	○	○				○				
	Serial Bus Setting Feature (CNC Axis)				○	○	○	○				○				
	Driver Information Display (CNC Axis)				○	○	○	○				○				
	Spindle Application Feature (CNC Axis)				○	○	○	○				○				
	Serial Bus PLC Axis				○	○	○	○				○				
	Dipole Front and Back System					—	○	○	○				○			
	Data Backup Recovery	Maker Backup				○	○	○	○				○			
	Customized Opening Screen					○	○	○	○				○			
	My Favourites	Only 8 key system supports				—	○	○	○				○			
	Project Protection Feature					○	○	○	○				○			
	Limit Access Manager					○	○	○	○				○			
RemoteAP Monitor					○	○	○	○				○				
Right-Angle All In One			OP20		△	△	△	△				△				
3D-Arc Interpolation					○	○	○	○				○				
Program Edit	Background Edit				○	○	○	○				○				
	Edit Protection				○	○	○	○				○				
	Immediate Grammar Check				○	○	○	○				○				
PLC	PLC Diagnosis Feature (FORCE I Point)				○	○	○	○				○				

Marks: \* Provided in Overseas and China / \*\*Only provided in China / \*\*\*Only provided for the stand alone with VGA / ○ Standard Function / △ Optional Function / - Not Available Function

Category	Items	Remark	Software Function	Standard Milling		Functional Milling		Compound Milling Machine							
				6 Series		21 Series	22 Series	210 Series				220 Series			
				6MA-E	6MB-E	21MA-E	22MA	210MA-E	210MA-E5	210MB-E	210MB-E5	220MA	220MA-5	220MB	220MB-5
Data Transfer	NETWORK			○	○	○	○	○				○			
	FTP			○	○	○	○	○				○			
	RS-485			○	○	○	○	○				○			
	DNC(Network)			○	○	○	○	○				○			
	DNC(USB)			○	○	○	○	○				○			
Information Display	Operation CV Display			○	○	○	○	○				○			
	Graphic Simulation			○	○	○	○	○				○			
	Partial Graphic Simulation			○	○	○	○	○				○			
	Dynamic Multi-Language Switch			○	○	○	○	○				○			
5 Axis Feature	Feature Coordinate System (Inclined Plane Processing)	G68.2、G68.3	OP13	—	Δ	Δ	Δ	Δ	Δ	Δ	Δ	Δ	Δ	Δ	Δ
	The Second Axis Group supports Feature Coordinate System		OP28	—	Δ	Δ	Δ	Δ	Δ	Δ	Δ	Δ	Δ	Δ	Δ
	5 Axis RTCP	G43.4、G43.5	OP12	—	—	—	—	Δ	—	Δ	—	Δ	—	Δ	
	4 Axis RTCP		OP29	—	Δ	Δ	Δ	Δ	Δ	Δ	Δ	Δ	Δ	Δ	
	Multiple Mechanism-Chain	G10 L5000 P_ Q_	OP27	—	Δ	Δ	Δ	Δ	Δ	Δ	Δ	Δ	Δ	Δ	
	5-Axis Mechanism Chain Measurement	RENISHAW、SYNTEC		—	—	—	—	Δ	—	Δ	—	Δ	—	Δ	
G Code Command	Spiral /Cone Interpolation	G02/G03		—	○	○	○				○				
	Spatial Arc Interpolation	G02.4/G03.4	OP19	—	○	○	○				○				
	High Precision Contour Control (HPCC)	G05 P10000	OP11	—	○	○	○				○				
	Smoothing Path Mode	G05.1		—	○	○	○				○				
	NURBS Interpolation	G06.2		—	○	○	○				○				
	Thread Cutting	G33		○	○	○	○				○				
	Auto Tool Measurement	G37		○	○	○	○				○				
	Tool Offsets	G45~G48		○	○	○	○				○				
	High Speed Peck Drilling Cycle	G73		○	○	○	○				○				
	Left Handed Tapping	G74		○	○	○	○				○				
	High Precision Boring Cycle	G76		○	○	○	○				○				
	Drilling Cycle	G81		○	○	○	○				○				
	Chopping	G81.1	OP44	—	○	○	○				○				
	Bottom Feed Hold Drilling Cycle	G82		○	○	○	○				○				
	Peck Drilling Cycle	G83		○	○	○	○				○				
	Tapping Cycle	G84		○	○	○	○				○				
	Boring Cycle	G85		○	○	○	○				○				
	High Speed Boring Cycle	G86		○	○	○	○				○				
	Back Boring Cycle	G87		○	○	○	○				○				
	Semi Automatic Fishing Boring Cycle	G88		○	○	○	○				○				
Bottom Feed Hold Boring Cycle	G89		○	○	○	○				○					
Multi-Group HSHP Parameter	G120.1		○	○	○	○				○					

\*SYNTEC have the right to modify product specification if necessary\*

## TAIWAN

**Taiwan (Hsinchu)**  
SYNTEC Technology Co., Ltd  
ADD : No.25, Yanfa 2nd Rd., East Dist.,  
Hsinchu City 300, Taiwan (R.O.C.)  
TEL : +886-3-6663553  
FAX : +886-3-6663505  
EMAIL : sales@syntecclub.com.tw

**Taichung**  
SUN-CNC Co., Ltd  
ADD : No. 22, Lane 428, Section 1, Fengyuan  
Boulevard, Fengyuan District  
TEL : +886-4-2537731  
TAX : +886-4-25349224

TANLU-CNC Co., Ltd  
ADD : No. 42, Jingming Road, Xitun District,  
Taichung City, Taiwan (R.O.C.)  
TEL : +886-4-23102626  
TAX : +886-4-23102636

**Tainan**  
ADD : No. 218, Denan Road, Rende District,  
Tainan City, Taiwan (R.O.C.)  
TEL : +886-6-2796707  
TAX : +886-6-2796705

## AROUND THE WORLD

**Malaysia**  
ADD : No.2, Jalan Astana 1D, Bandar Bukit Raja, 41050  
Klang, Selangor, Malaysia.  
TEL : +603-33115887  
EMAIL : sales.malaysia@syntecclub.com

**Thailand**  
ADD : 78/38 Kheha Romklao Rd., Khlong Song Ton Nun,  
Lat Krabang, Bangkok, 10520  
TEL : +662-006-5738  
EMAIL : thanawat@syntecclub.com.tw

**Vietnam**  
ADD : 3F, No. 36, A4 Street, Ward 12, Tan Binh District,  
Ho Chi Minh City, Vietnam  
TEL : +8493832829  
FAX : +84282235556  
EMAIL : andyngo@vnsyntec.com.vn

**Turkey**  
ADD : Kücükbakkalkoy Mah. Vedat Günyol Cd. Defne Sok.  
No:1 D:1502 Flora Residence, 34750 Ataşehir/Istanbul, Türkiye  
TEL : +90-216-2662475  
EMAIL : daisy.cheng@syntecclub.com.tw

**USA (South California)**  
ADD : 2841 Saturn St, #D, Brea, CA 92821  
TEL : +1909-551-0187  
EMAIL : info@syntecamerica.com

**Indonesia**  
PT. OTOMASI BERSAMA INDONESIA  
ADD : Ruko Arcadia Mataram Blok B, No 15, Kelurahan  
Cibatu, Kecamatan Cikarang selatan, 17530, Indonesia  
TEL : +6221 2210 4832  
EMAIL : yulius@otomasi.co

**India (Distributor)**  
Luna Technologies Pvt. Ltd.  
ADD : W-200 TTC Industrial Estate , Khairme ,  
Thane Belapur Road , Navi Mumbai -400708  
TEL : +91-22-61780110  
E-mail : sales@lunabearings.com

## CHINA

**Jiangsu**  
SYNTEC TECHNOLOGY(Suzhou)CO.,Ltd  
ADD : Building B, No.9 Chunhui Road, Suzou Industrial  
Park, China  
TEL : 0512-69008860  
FAX : 0512-65246029

SYNTEC TECHNOLOGY(Suzhou)CO.,Ltd WuXi  
Office  
ADD : 8906, Yuye Network Building, 68 Exploration  
Road, Huishan District, Wuxi City, Jiangsu Province,  
China  
TEL : 15295664580

SYNTEC TECHNOLOGY(Suzhou)CO.,Ltd  
Changzhou Office  
ADD : Room 2217, Yatai Fortune Center, No. 1  
Huayang Street, Hutang Town, Wujin District,  
Changzhou City, Jiangsu Province, China  
TEL : 18168828572

SYNTEC TECHNOLOGY(Suzhou)CO.,Ltd  
Xuzhou Branch  
ADD : Room 1503, South of Territorial Sea Office  
Building, No. 66, Kunpeng Road, Xuzhou Economic  
Development Zone, Jiangsu Province, China  
TEL : 13656201020

SYNTEC TECHNOLOGY(Suzhou)CO.,Ltd  
NanJingBranch  
ADD : Room 712, Research Building 1, Lianggang  
Park, 117 Suyuan Avenue, Jiangning District, Nanjing  
City, Jiangsu Province, China  
TEL : 025-52717702  
FAX : 025-52717710

SYNTEC TECHNOLOGY(Suzhou)CO.,Ltd  
NanTong Branch  
ADD : Room T3-1301, No. 108, Gangzha District,  
North Street, Nantong City, Jiangsu Province, China  
TEL : 0513-89077025  
FAX : 0513-89072057

SYNTEC TECHNOLOGY(Suzhou)CO.,Ltd  
NanTong Branch Yanchen Office  
ADD : Room 401, building 13, phase 9, Zhongnan  
Century City, Yandu District, Yancheng City, Jiangsu  
Province  
TEL : 18625235150

**Shaanxi**  
SYNTEC TECHNOLOGY(Suzhou)CO.,Ltd Xi'an  
Branch  
ADD : Room 1, 1328, Building 4, Yicui Garden I  
Duhui, No. 10, South Tangyan Road, Xi'an  
High-tech Zone  
TEL : 029-88287423

SYNTEC TECHNOLOGY(Suzhou)CO.,Ltd Baoji  
Office  
ADD : Room 1702, Unit 3, Building 8, Dongling Xinsihji,  
Binhe North Road, Jintai District, Baoji, Shaanxi  
Province, China

**Guangdong**  
SYNTEC TECHNOLOGY(Suzhou)CO.,Ltd GuangDong  
Branch  
ADD : Factory 201or 301, Building A, No.10, Nanjiang  
Third Road, Zhujiang Street, Nansha District, Guangzhou  
City  
TEL : 020-39089367  
FAX : 020-39089791

SYNTEC TECHNOLOGY(Suzhou)CO.,Ltd DongGuan  
Branch  
ADD : 0769-81661ing 1, Mobile Group, No. 522, Zhen  
'an East Road, Chang'an Town, Dongguan City,  
Guangdong Province, China  
TEL : 0769-81660318

SYNTEC TECHNOLOGY(Suzhou)CO.,Ltd GuangZhou  
Branch  
ADD : Room 404, Building 2, Seven Friendship Building,  
No. 8 Luojiacun Section, Fuyi Road, Dalong Street,  
Panyu District, Guangzhou City, Guangdong Province  
TEL : 020-34583040  
FAX : 020-34583220

SYNTEC TECHNOLOGY(Suzhou)CO.,Ltd ChangPing  
Branch  
ADD : Floor 5, Huilong Building, No. 8, Zhanqian 1st  
Road, Benshi Village, Changping Town, Dongguan City,  
Guangdong Province, China  
TEL : 0769-82826802  
FAX : 0769-82826820

SYNTEC TECHNOLOGY(Suzhou)CO.,Ltd ShenZhen  
Branch  
ADD : 406, Block E, Haowei new material industrial  
park, No. 8, Qinglan 1st Road, Zhukeng community,  
Longtian street, Pingshan District, Shenzhen,  
Guangdong  
TEL : 0755-84320380  
FAX : 0755-84559490

SYNTEC TECHNOLOGY(Suzhou)CO.,Ltd JiangMen  
Branch  
ADD : Room 02, 7th Floor, Torch Building, Hi-Tech  
Zone, 288 Jinou Road, Jianghai District, Jiangmen City,  
Guangdong Province · China  
TEL : 0750-3762143

**Henan**  
SYNTEC TECHNOLOGY(Suzhou)CO.,Ltd LuoYang  
Branch  
ADD : Room 704, Runsheng Building, Intersection of  
Heluo Road and Sanshan Road, Hi-Tech Zone, Luoyang,  
Henan Province, China  
TEL : 0379-65110352  
FAX : 0379-65110352

SYNTEC TECHNOLOGY(Suzhou)CO.,Ltd  
ShiJiaZhuang Office  
ADD : 4-3-801, Reyli Community, No. 8 Huaxing Road,  
Qiaoxi District, Shijiazhuang City, Hebei Province, China  
TEL : 18622728669  
FAX : 0379-65110352

**Fujian**  
SYNTEC TECHNOLOGY(Suzhou)CO.,Ltd XiaMen  
Branch  
ADD : Floor 3, No. 2, Jixiang West Road, Xinmin Town,  
Tong'an District, Xiamen City, Fujian Provinc  
TEL : 0592-7191901  
FAX : 0592-7220536

**Zhejiang**  
SYNTEC TECHNOLOGY(Suzhou)CO.,Ltd HangZhou  
Branch  
ADD : 1202, Unit 2, Building 1, Dikai Building, No.471  
Jinsheng Road, Xiaoshan District, Hangzhou City,  
Zhejiang Province, China  
TEL : 0571-82751187

SYNTEC TECHNOLOGY(Suzhou)CO.,Ltd HangZhou  
Branch Jinhua Office  
ADD : Room G204, No. 1729, Dongshi North Street,  
Xinshi street, Wucheng District, Jinhua City, Zhejiang  
Province  
TEL : 1599-0026533

SYNTEC TECHNOLOGY(Suzhou)CO.,Ltd WenZhou  
Branch  
ADD : 1205-3, Honghai building, Ouhai District,  
Wenzhou City, Zhejiang Province  
TEL : 0577-86158619

SYNTEC TECHNOLOGY(Suzhou)CO.,Ltd NingBo  
Branch  
ADD : Room 1207, Ivy league Building, No.262, Lane  
416, Zhaohui Road, Jiangdong-District, Ningbo City,  
Zhejiang Province, China  
TEL : 0574-87750305

SYNTEC TECHNOLOGY(Suzhou)CO.,Ltd WenLing  
Branch  
ADD : Room 509, Haocheng Service Building, No. 838,  
Wanchang Middle Road, Chengdong Street, Wenling  
City, Taizhou City, Zhejiang Province, China  
TEL : 0576-86138372  
FAX : 0576-86119106

SYNTEC TECHNOLOGY(Suzhou)CO.,Ltd YuHuan  
Office  
ADD : Room 302, Unit 2, Building 1, Hualong Times  
Square, 226 Provincial Road, Chunmen Town, Yuhuan  
County, Taizhou City, Zhejiang Province, China  
TEL : 13088636567

**Chongqing**  
SYNTEC TECHNOLOGY(Suzhou)CO.,Ltd ChongQing  
Branch  
ADD : 1007, Building 4, No.62, East Section of Taishan  
Avenue, Yubei District, Chongqing  
TEL : 023-67913296  
FAX : 023-67634382

SYNTEC TECHNOLOGY(Suzhou)CO.,Ltd ChengDu  
Office  
ADD : ADD : Room102, Unit 1, Building 24, Jiazhaoye  
Modern City, No.898, Section 2, Xingxing Road,  
Dongsheng Street, Shuangliu District, Chengdu City,  
Sichuan Province, China  
TEL : 18302866229

**Tianjin**  
SYNTEC TECHNOLOGY(Suzhou)CO.,Ltd TianJin  
Branch  
ADD : No.37, Area A, Qiao Ruijing Garden, No.7  
Waihuian West Road, Xiqing District, Tianjin, China  
TEL : 022-23739192

**Shandong**  
SYNTEC TECHNOLOGY(Suzhou)CO.,Ltd JINan  
Branch  
ADD : 502, Unit 3, Building 11, Luneng Kangqiao, No. 7  
28, Sankongqiao Street, Tianqiao District, Jinan,  
Shandong  
TEL : 0531-85907208  
FAX : 0531-85905708

SYNTEC TECHNOLOGY(Suzhou)CO.,Ltd QingDao  
Office  
ADD : Room 1004, Unit 2, Building 14, Jinri Zidu,  
Tianshan Road, Chengyang District, Qingdao,  
Shandong  
TEL : 18663779803

SYNTEC TECHNOLOGY(Suzhou)CO.,Ltd TengZhou  
Office  
ADD : 13 households, row 1, Xiaokang village, Yucai  
Road community, Beixin street, Tengzhou City,  
Shandong Province  
TEL : 15098706233

**Hubei**  
SYNTEC TECHNOLOGY(Suzhou)CO.,Ltd WuHan  
Branch  
ADD : 2003-2006, Building A, Optics Valley  
International, Jiayuan Road, No.456 East Luoyu Road,  
Hongshan District, Wuhan City, Hubei Province, China  
TEL : 027-87638876  
FAX : 027-87204137

**Liaoning**  
SYNTEC TECHNOLOGY(Suzhou)CO.,Ltd ShenYang  
Branch  
ADD : Room 1212, Tianxin Building, 17 Jianshe West  
Road, Tiexi District, Shenyang City, Liaoning Province,  
China, China  
TEL : 18698806526

**Anhui**  
SYNTEC TECHNOLOGY(Suzhou)CO.,Ltd ShenYang  
Branch  
ADD : Room 1005, block B, Wanda Ginza, rongchuang  
Mao, Binhu, Hefei, Anhui Province, China.  
TEL : 0551-63814183  
FAX : 0551-63814183

**SYNTEC  
TECHNOLOGY CO.,LTD.**

SYNTEC Technology Co., Ltd.  
No.25, Yanfa 2nd Rd., East Dist.,  
Hsinchu City 300, Taiwan (R.O.C.)

☎ 886-3-6663553  
☎ 886-3-6663505  
✉ sales@syntecclub.com.tw

Suzhou SYNTEC Equipment Co.,Ltd.  
No. 9th, Chun Hui Road, Suzhou  
Industrial Park, Jiangsu Province

☎ 86-512-69008860  
☎ 86-512-65246029  
✉ service@syntecclub.com.cn



<http://www.syntecclub.com.tw>

Copyright © SYNTEC Technologies Corp.  
©2023.05\_rev.1 (PRINTED IN TAIWAN)

\*SYNTEC reserves the right to revise catalog information at any time without notice due to typographical errors or any errors.